



# The Polesworth School

---

ENSURING EXCELLENCE



# Uniform Guide

# Our Uniform

At The Polesworth School we pride ourselves on the high standards of dress of our students. It is important that our students show their readiness to learn, responsibility and respect of our school by adhering to our school uniform policy. A neat and correct uniform reflects our well-ordered and inclusive community and supports us in ensuring excellence for all. The support of parents is essential to this process.

We are very aware that many supermarkets and high street stores have clothing in their uniform sections which do not meet our dress code. All too often students arrive in school wearing inappropriate trousers or shoes which they have purchased from uniform sections of high street stores, but which are not in line with our uniform policy. Clearly, we want to avoid parents having to replace these items to meet our expectations and the following document has therefore been produced to assist parents in making appropriate choices first time. If you are at all in doubt, please check with your child's Head of Year first.

**Plain white blouse or shirt. Coloured T-shirts should not be visible underneath them.**

**The Polesworth School burgundy blazer, with school badge**

**The Polesworth School clip on House tie and Student Lanyard.**

**Optional plain knit black v-neck pullover with school badge supplied only by our approved uniform provider. Cardigans/hoodies are not permitted as an alternative.**

**Plain black trousers (not black jeans, leggings, skin-tight trousers, hipsters, flared trousers, cords or combat trousers).**

**Optional plain black school skirt with school badge supplied only by our uniform provider, which is currently Anglia Sports and Schoolwear (a link can be found on The Polesworth School website.)**

**White or black ankle socks or plain black tights (no knee-high socks or knee-high tights).**

**Plain black leather or leather effect shoes or trainers.**

**An outdoor coat or jacket.**

**(Not a sweatshirt, hoodie or track suit top. Any jacket must have full length opening.)**



# Trousers

Trousers should be plain black, loose fitting and smart in appearance. Black jeans, leggings, skin-tight trousers hipsters, flared trousers cords or combat trousers are not permitted. They must not be denim or have any coloured external labelling, visible zips, studs or other decorative embellishments. The only acceptable skirt is the skirt with the school logo available from the school suppliers.



# Jumpers

Students are able to wear an optional plain knit black v-neck pullover with school badge supplied only by our approved uniform provider. Cardigans/hoodies are not permitted as an alternative.



# Shoes

The following examples show what types of shoe styles are acceptable and suitable to be worn with school uniform.

- Plain all black shoes or all black polishable leather/leather effect trainers - not boots.
- Boots may only be worn if the weather is particularly bad and, on these occasions, trousers must not be tucked into the boots.
- All black polishable shoes or all black leather/leather effect trainers must be of a smart, safe and sensible design - not canvas plimsolls.
- All black polishable shoes or all all black leather/leather effect trainers must not display logos or laces in any other colour than all black.





# PE Kit

## P.E. Kit (compulsory)

- Black polo shirt with school logo.
- Black shorts with school logo or plain black shorts or leggings. Shorts or leggings must not display non-school logos in any other colour than black.
- Shorts must be a minimum length of 7-inches.
- $\frac{3}{4}$  black zip training top and/or school rugby shirt, at least one of these items is compulsory. The  $\frac{3}{4}$  black zip must be purchased from the school shop.
- Black football socks with school logo or plain black football socks for winter sports.
- White or Black crew socks for SUMMER or INDOOR sports.
- Sports trainer - suitable cushioning and soles.
- Football boots, shin-pads and gum shields - when on relevant activity.
- Suitable bag to carry kit.

Note - if your child is wearing the  $\frac{3}{4}$  plain black zip top they must have the school polo shirt underneath for lessons.

## P.E Kit (optional)

- Plain black base layers
- Gloves for winter
- Woolly hat for winter

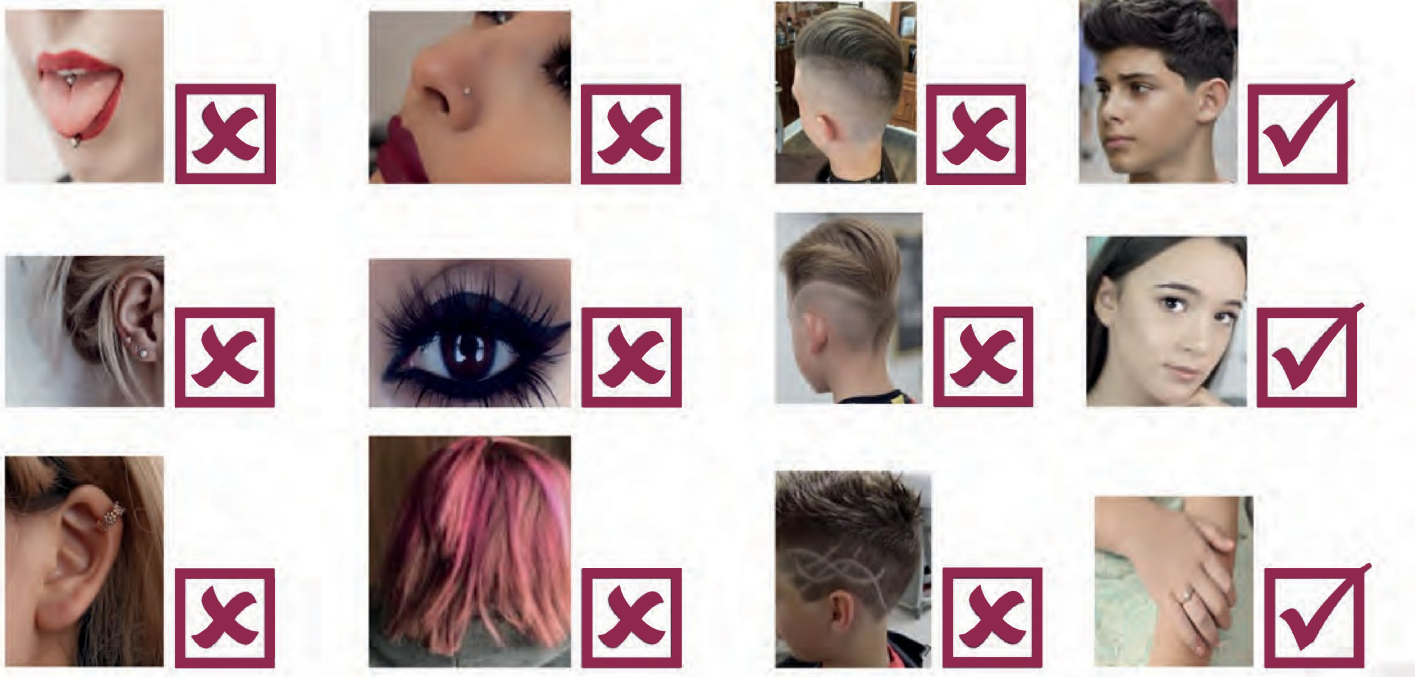
## P.E Kit (recommended)

- Plastic bag for any wet clothing and a towel



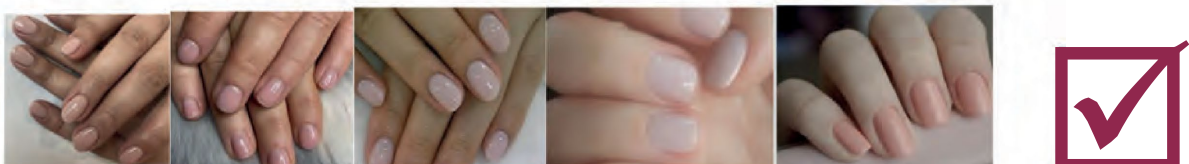
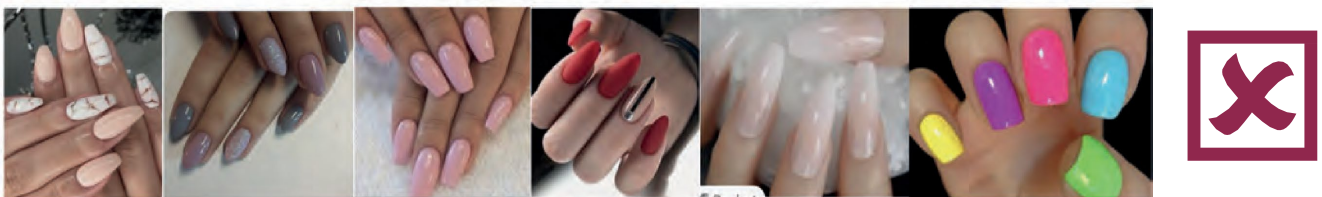
# Jewellery, Make-up & Hair

- Jewellery should be minimal. Only ONE pair of small stud earrings is allowed. Rings should be limited to one ring on each hand. Bracelets and bangles are not permitted.
- Nose studs and other facial piercings are NOT permitted and no other visible body piercings are allowed.
- There should be no visible body art.
- Fashion belts/brightly coloured belts are not permitted.
- We do not allow extremes of hairstyle, hair colour or hair accessories. Hair should not be closely shaved, patterned or multi coloured. Only natural hair colours are permitted.
- Make up must not be extreme.



## Nails

No false or excessively long nails. Only natural shades of nail polish may be worn.



# Further Support

- The school receives pupil premium funding that may be used to subsidise the purchase of compulsory school uniform, in cases of extreme hardship. Requests should be put in writing and addressed to the Headteacher.
- Parents should be aware that at The Polesworth School it is common practice for all staff to challenge students who are not in full school uniform.
- It is important that each item of clothing is labelled with the child's name as this avoids problems of clothing getting mixed up, particularly in PE changing rooms. Clear labelling means that if an item of uniform is mislaid it can be identified and returned quickly.
- If your child has a temporary medical condition and the risk assessment suggests that they are safe to be in school, the Headteacher may agree to relax the uniform rules for an agreed period of time.
- Our school supplier is Anglia and a link to the shop can be found on our website in the Uniform section that is located in the About Us section.
- Should you require any further information, please contact your child's tutor or Head of Year.
- Please be mindful that we will confiscate items of clothing and accessories etc. that are not appropriate. We will replace inappropriate items with appropriate uniform that must be worn and returned at the end of the school day.
- Persistent breaches of the uniform code will result in the application of school sanctions.

**Thanks for your ongoing support!**





# The Polesworth School

---

## ENSURING EXCELLENCE

[www.thepolesworthschool.com](http://www.thepolesworthschool.com)

Dordon Road, Dordon, Tamworth, Staffs, B78 1QT

01827 702205

[admin@thepolesworthschool.com](mailto:admin@thepolesworthschool.com)

